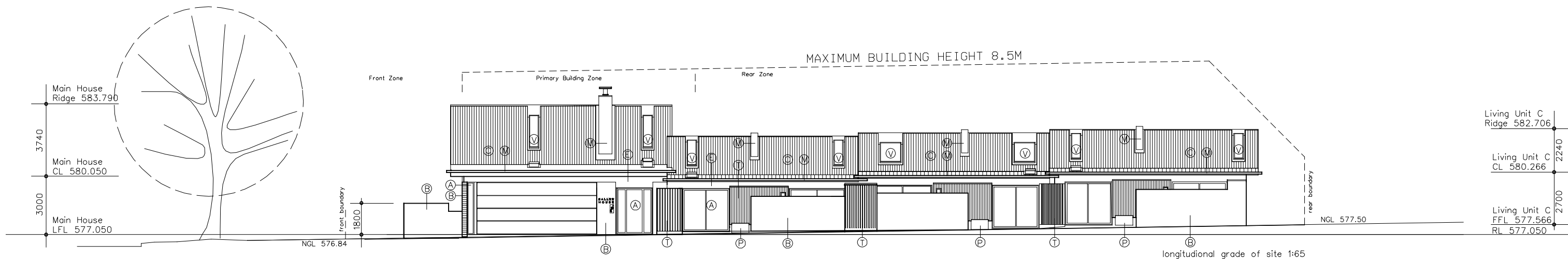
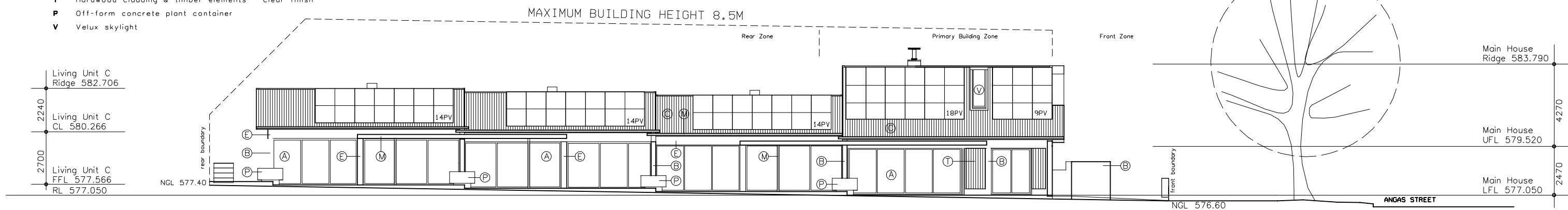
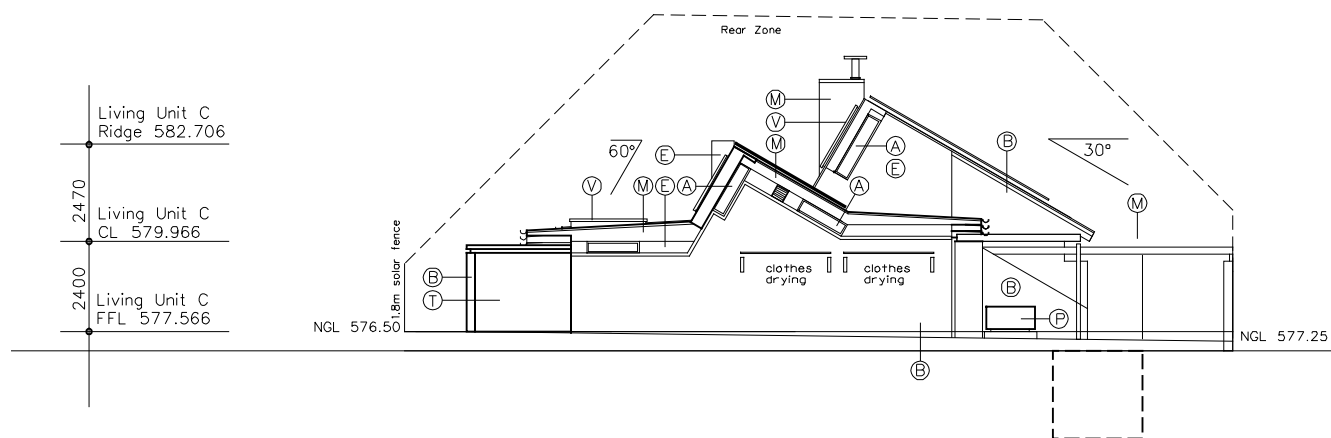


Schedule of External Materials and Finishes (Ref: Colour Sample Schedule)

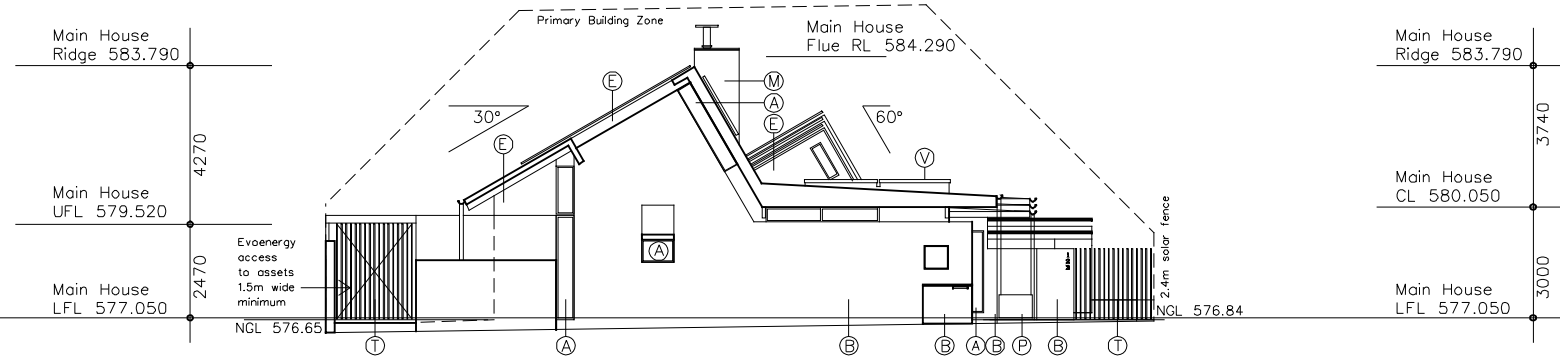
- A** Thermal break aluminium window frames with clear double-glazed units
- B** Off-white flush-jointed face brickwork
- C** Metal deck roof sheet Colorbond finish - "Shale Grey"
- M** Metalwork, gutters, fascias and roof trim and powdercoated metal components Colorbond finish - "Monument"
- E** Lightweight sheet cladding - paint finish
- T** Hardwood cladding & timber elements - clear finish
- P** Off-form concrete plant container
- V** Velux skylight



South Elevation



East Elevation



**West Elevation
24 Angas Street**

Brett Lowe raia
architect



41 wilshe street
dickson act
ABN 87 786 301 828
ACT Reg. No. 1085
m 0412774945

Stellulata Pty Ltd Cohousing
ACT Government Demonstration Housing - 24 Angas Street
Block 6 Section 25 AINSLIE

Revisions

Issue	Description	Date
Issue 00	Draft - Issue Demonstration Housing for Knight Frank	13 Aug 2019

TITLE
Elevations

DATE
14 August 2019

0 1 2 3 4 5 10m
1:100 @ A1

A04 - 00